

UPDATE **DiabloCam Wireless** or **DiabloCam Light** using the Cas Interface 2+Plus or the Cas Interface 3.

To update the CAM you can do it in 2 ways:

- Using the Cas Interface 2 +Plus/Cas Interface 3. Very Fast.
- Using the Base station. Slower than Cas Interface.
I will not explain this because it is quite well explained in official user guide here:
http://www.diablocam.com/download/ManualeDiablo_en.pdf

Update with Cas Interface 3 or Cas Interface 2+Plus.

This procedure is working with DiabloCam Light and DiabloCam Wireless.

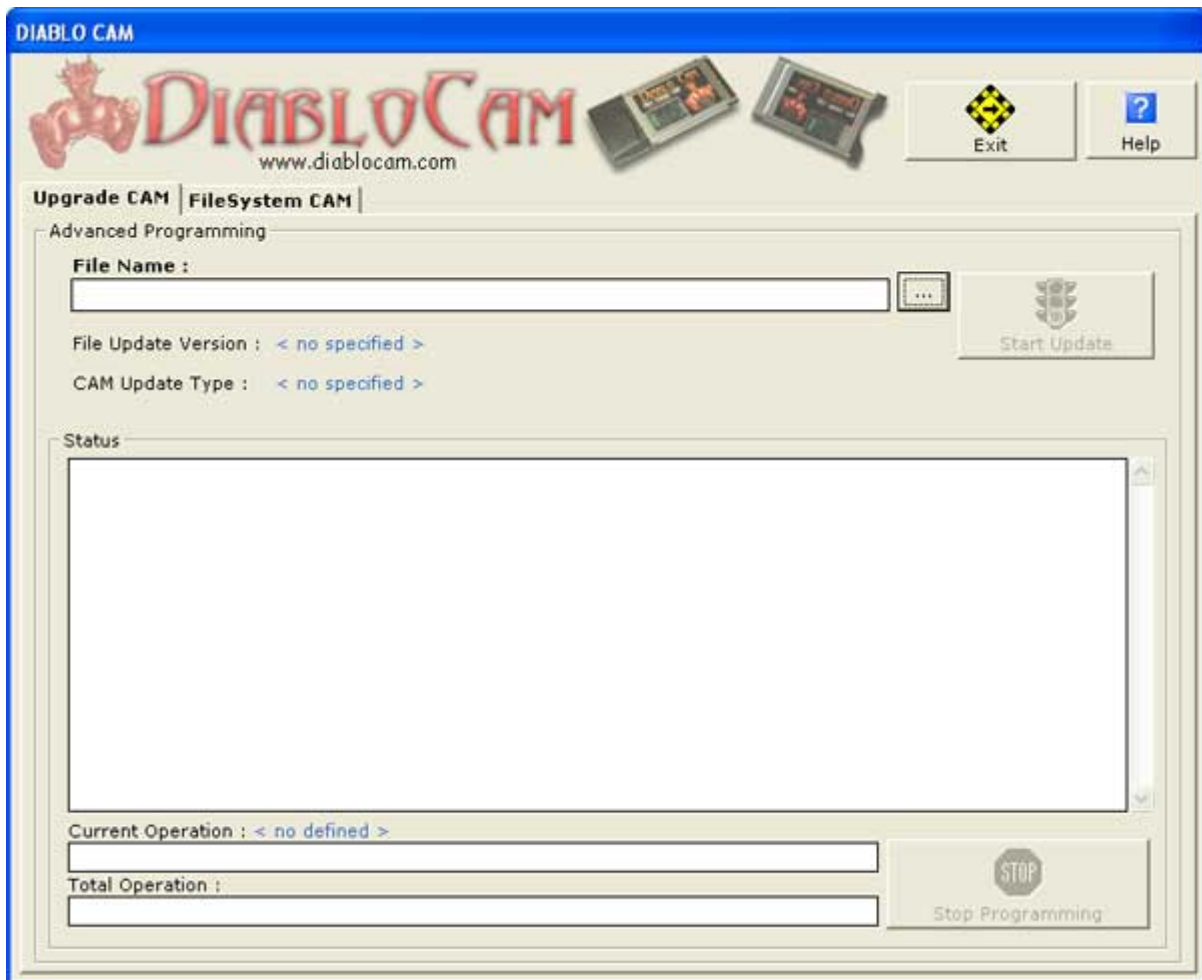
1. Download the Cas Studio 7.0a or higher from Duolabs web site.
2. Install Cas Studio following the instructions. I advise you to read the full Cas Studio manual available on Duolabs web site.
3. Connect the Cas Interface 3 or 2+Plus to the USB port and launch the Cas Studio.
4. Make sure the Cas Studio is working and the Cas Interface 3 or 2+Plus is properly connected and the Cas Studio detects it by showing the serial number and the connected device on the bottom left of the screen.



5. Go to "Cam Module" on the top menu.

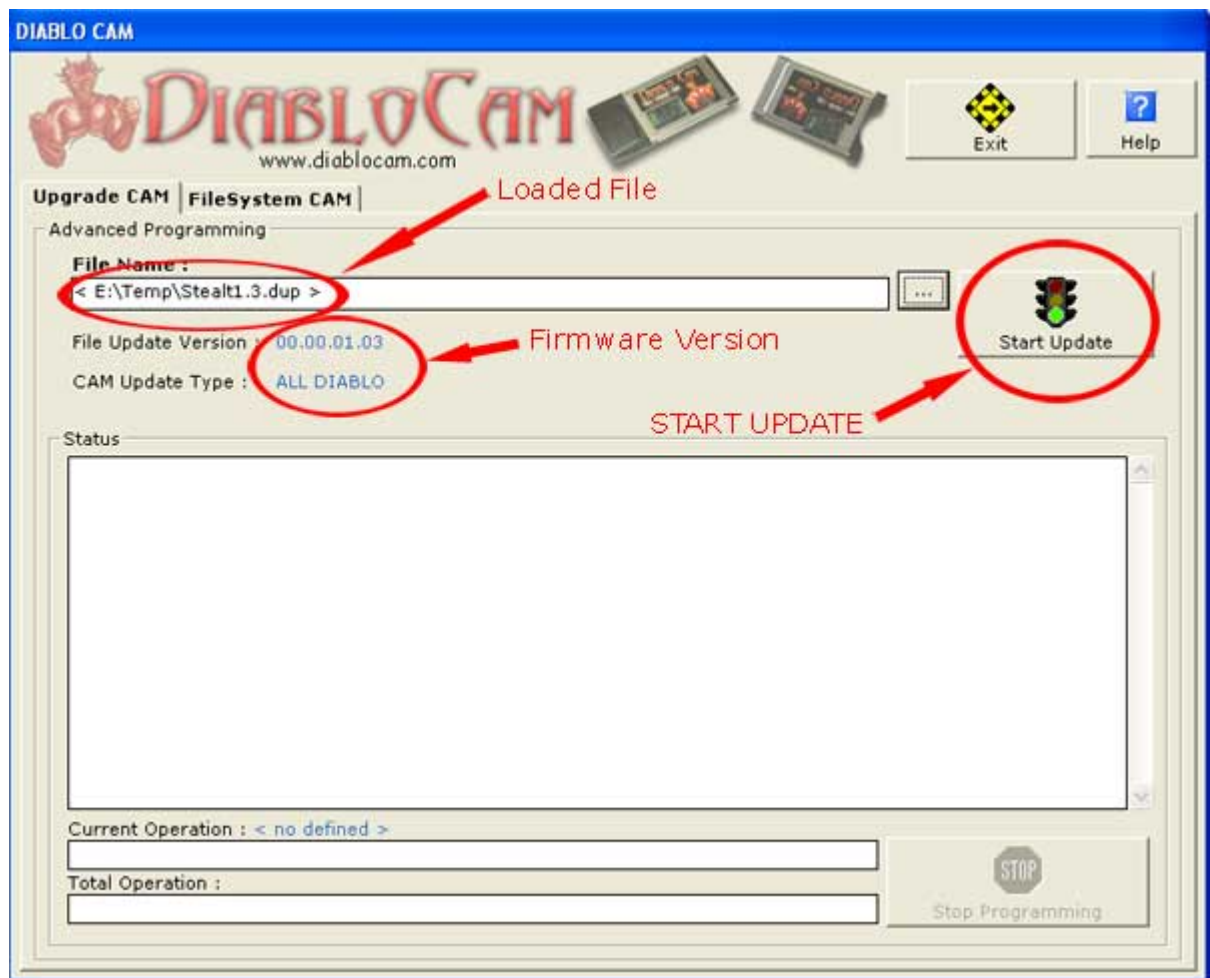


6. Choose Diablo Cam from the available CAMs and the next screen should appear (maybe slightly changed because this is the version 7.0a I tested).



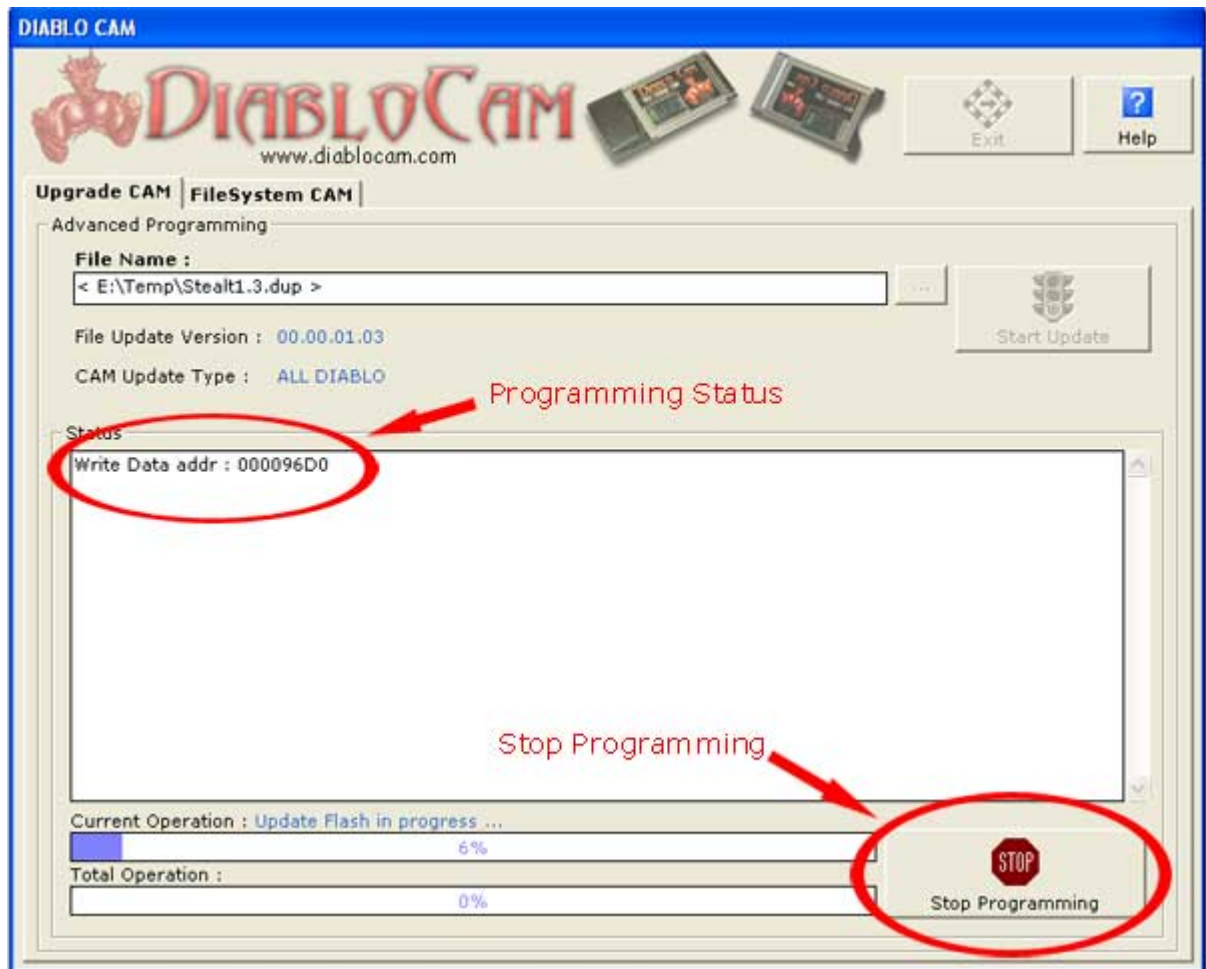
7. Press the "... " and choose the file you want upload in the CAM. The file must be ".dup" (Diablo UPdate).

8. The following screen should appear:



9. You should see the loaded file, the firmware version including for which CAM the file is made. If it shows "ALL DIABLO" it means that this is compatible with all Diablo Versions.
10. Next Step press the "Start Update" button.

11. Now it should appear this page:



12. The progress bar should increase its status. It may happen that it stops sometimes for a little while during the programming, this means that is changing the programming area.

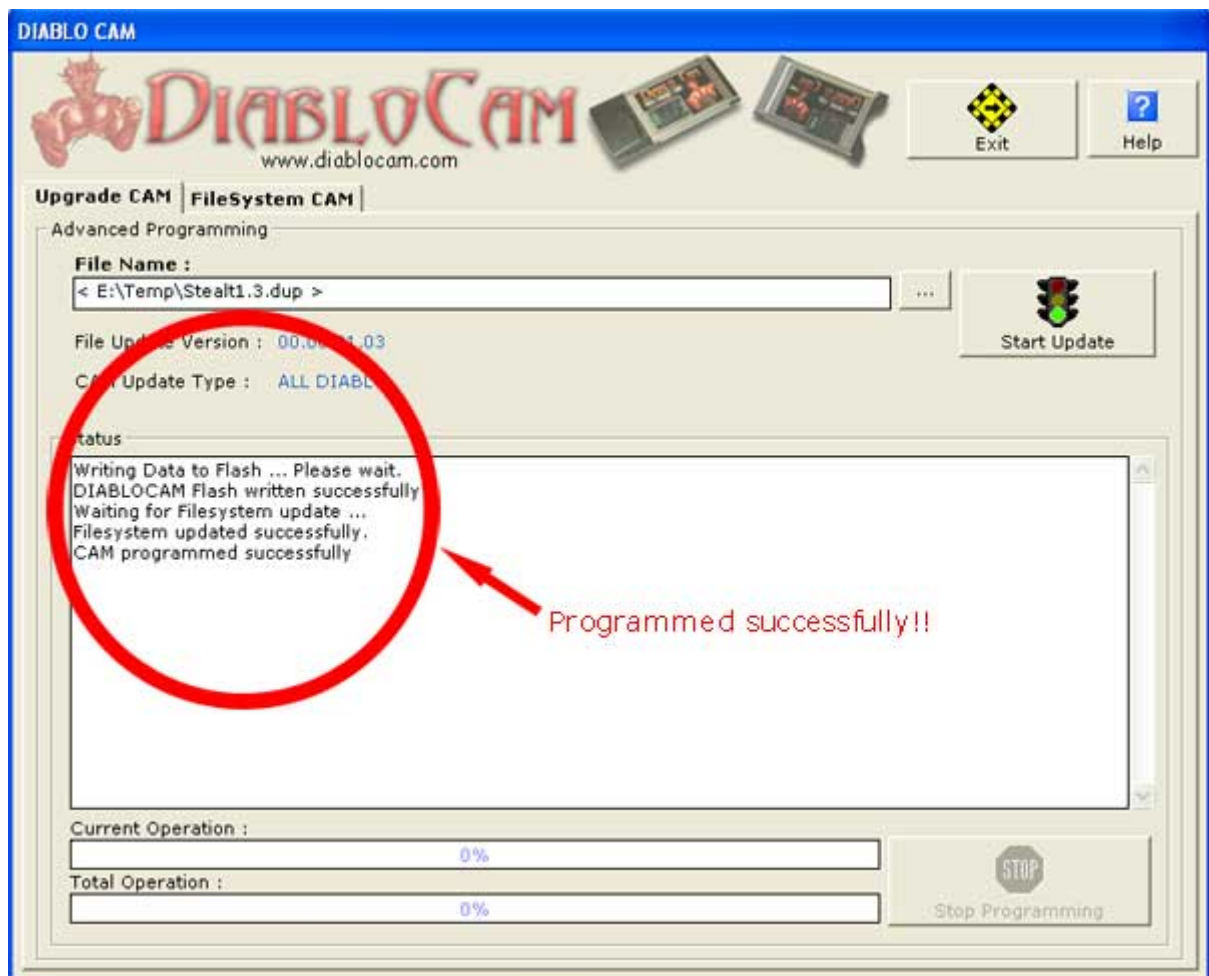
DO NOT STOP programming if not strictly necessary!

You will even see while the firmware is de-compressed and all the Filesystem files are copied into the Dataflash following the root and tree of the file.

In a few words it look like the .dup file is a compressed file and it has all the file structure of the Flashmemory already inside, so that once you update the CAM it creates a new Dataflash with a new FileSystem structure and then copies all the files.

Like you re-format your PC and then install the applications.

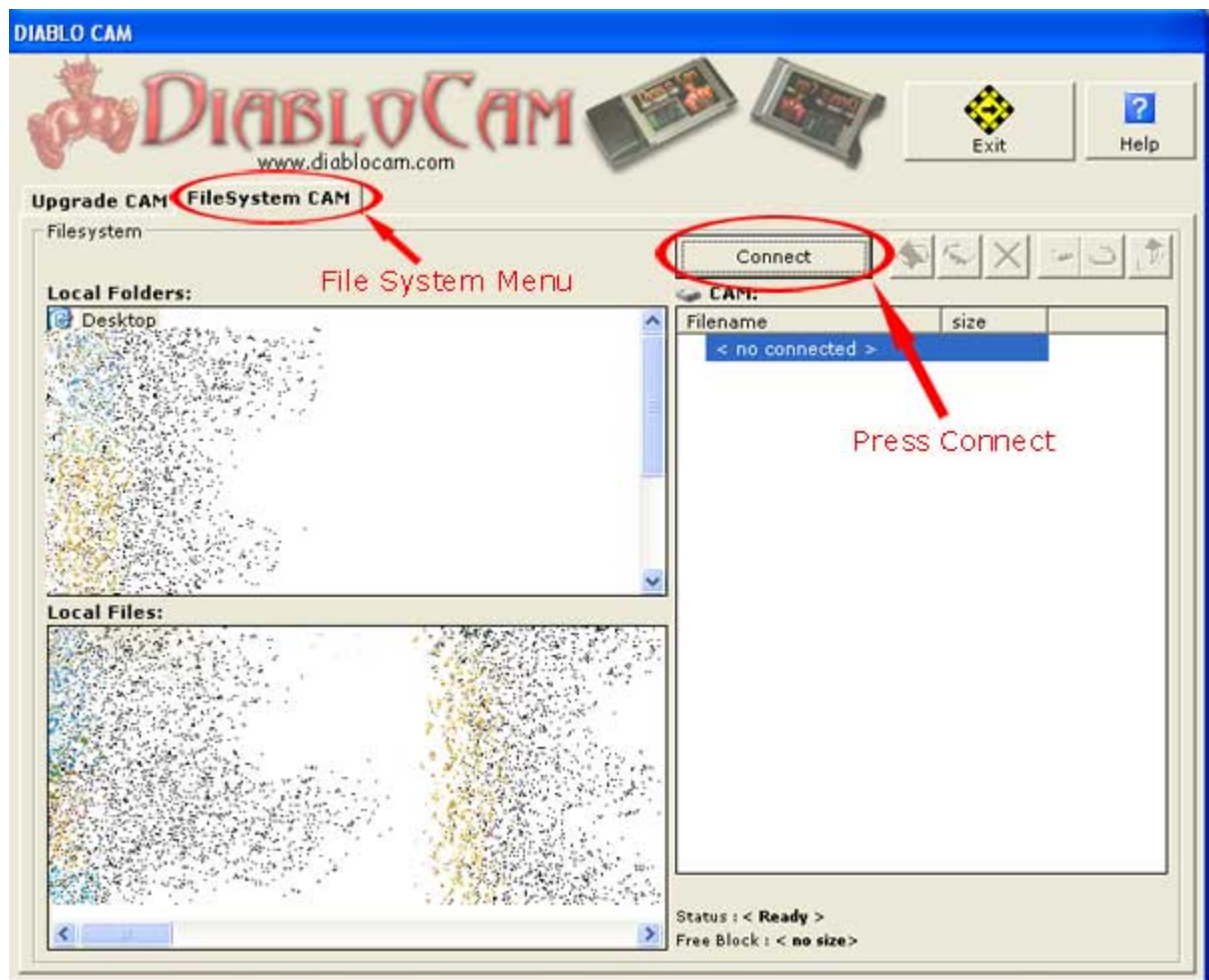
13. Once the CAM is programmed successfully you will see the following screen:



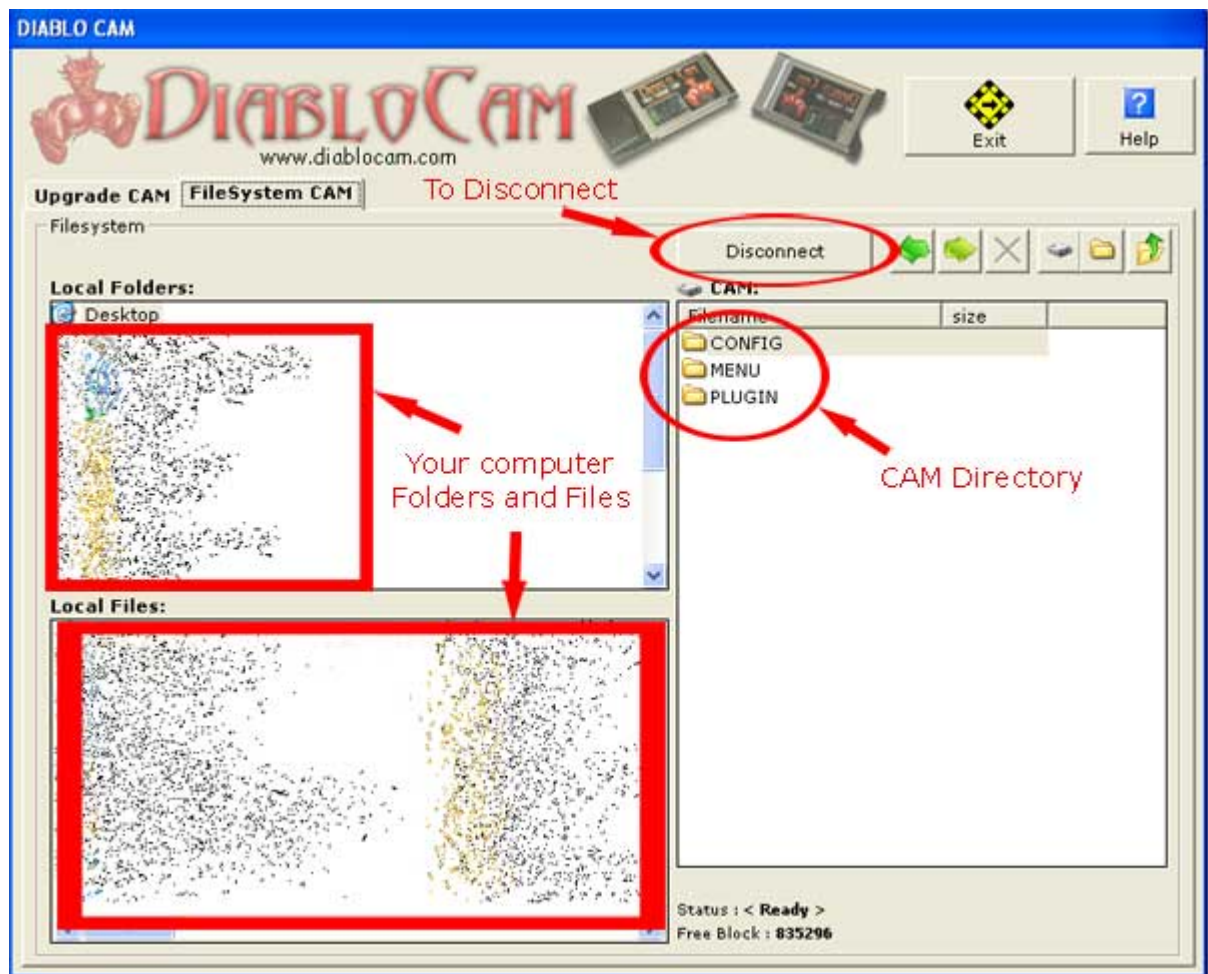
14. If for any reason the above procedure comes with an error start again.
15. Now you have successfully programmed your CAM. Look on next chapter what is the result of your programming.

Take a look at the results of your programming:

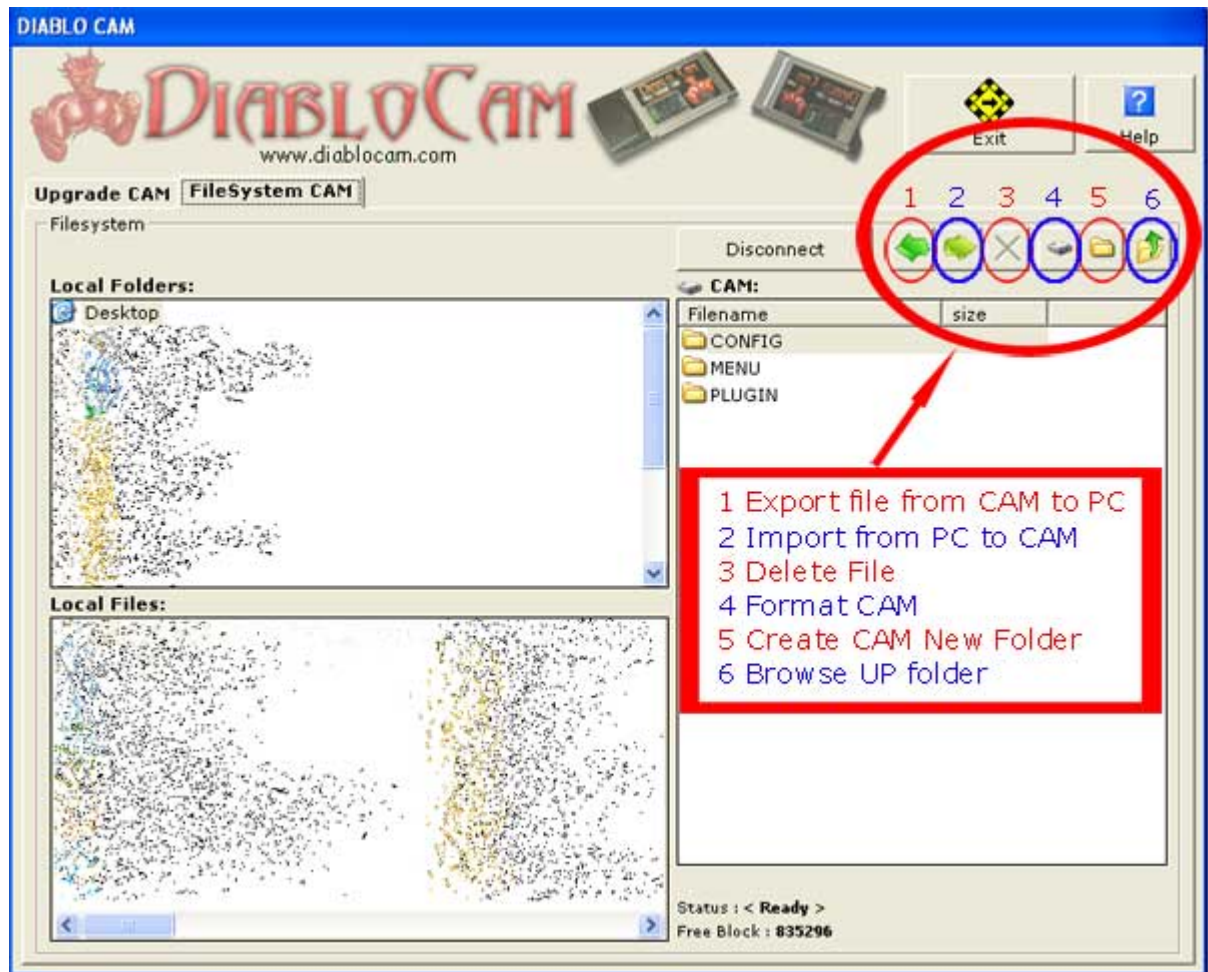
1. First of all go to the FileSystem menu keeping the CAM inserted and press "Connect" button:



2. The following screen should appear:



3. The CAM directory may be different because it depends on the firmware version you are loading and some features will be explained later. Now it is important to remark that the CAM browsing functions are enabled on the TOP menu like this image:



4. What's in the Folders? All the files are in XML format easy to edit and to understand (maybe for expert users). You can find the Language ENGLISH.XML and ITALIAN.XML I guess you can edit this and make your own language.
The most important file I have found is the Keys.Bin file in the Plug-in Directory.
This file is the Key file for the Emulators.
So let's take a look at how to change the keys on the DiabloCam using the Key Editor and put again in the CAM.

That's All folks ...

Enjoy...